

# Sensitivity of the fasciae to sex hormone levels: Modulation of collagen-I, collagen-III and fibrillin production

Caterina Fede, Carmelo Pirri, Chenglei Fan, Giovanna Albertin, Andrea Porzionato, Veronica Macchi, Raffaele De Caro, Carla Stecco

Published: September 26, 2019 • <https://doi.org/10.1371/journal.pone.0223195>

## Abstract

Although it is now recognized that women suffer from myofascial pain to a greater extent than men, and that the muscular fasciae can respond to hormonal stimuli, thanks to the expression of sex hormone receptors, how the fasciae can modify their structure under hormonal stimulation is not clear. In this work, an immunocytochemical analysis of collagen-I, collagen-III and fibrillin were carried out on fibroblasts isolated from human fascia lata after *in vitro* treatment with various levels of sex hormones  $\beta$ -estradiol and/or relaxin-1, according to the phases of a woman's period (follicular, periovulatory, luteal, post-menopausal phases and pregnancy). This study demonstrates for the first time that fascial cells can modulate the production of some components of the extracellular matrix according to hormone levels, when treated with  $\beta$ -estradiol: collagen-I falls from 6% of positivity in the follicular phase to 1.9 in the periovulatory phase. However, after the addition of relaxin-1 to the cell culture, the production of extracellular matrix decreased and remained at the same level (1.7% of collagen-I, at both follicular and periovulatory levels of hormones). These results confirm the antifibrotic function of relaxin-1, thanks to its ability to reduce matrix synthesis. They are also a first step in our understanding of how some hormonal dysfunctions in women can cause a dysregulation of extracellular matrix production in fasciae.

**Citation:** Fede C, Pirri C, Fan C, Albertin G, Porzionato A, Macchi V, et al. (2019) Sensitivity of the fasciae to sex hormone levels: Modulation of collagen-I, collagen-III and fibrillin production. PLoS ONE 14(9): e0223195. <https://doi.org/10.1371/journal.pone.0223195>

**Editor:** Yi Jiang, Georgia State University, UNITED STATES

**Received:** April 29, 2019; **Accepted:** September 15, 2019; **Published:** September 26, 2019

**Copyright:** © 2019 Fede et al. This is an open access article distributed under the terms of the [Creative Commons Attribution License](#), which permits unrestricted use, distribution, and reproduction in any medium, provided the original author and source are credited.

**Data Availability:** All relevant data are within the paper.

**Funding:** The authors received no specific funding for this work.

**Competing interests:** The authors have declared that no competing interests exist.

## Introduction

Estrogens have long been known as a regulating factor of metabolism in tissues such as bone, muscle, cartilage, tendon and ligament, affecting the musculoskeletal functions [1]. The estrogen-beta receptor has also been described recently in the tissue of tendons and ligaments [2], and only in one of our recent works [3] the expression of sex hormone receptors was also demonstrated in the muscular fasciae. It was recently observed that knee laxity is significantly greater around ovulation, when estrogen peaks [4], with an increased risk of injury [5]. Konopka et al. [6] demonstrated that female collegiate athletes with serum relaxin concentrations above 6.0 pg/mL are more than four times as likely to suffer from anterior cruciate ligament (ACL) tears. The rapid changes of laxity during the cycle may be due to any significant change in collagen content within days. Another study has shown that short-term exposure to physiological concentrations of estrogen decreases the mechanical function of ligaments by inhibiting the activity of the crosslinking enzyme lysyl oxidase, which contributes to the increased laxity seen in the female knee [7].

Several studies have evaluated the effect of female sex hormone supplementation in tendons: some authors report that estradiol has an inhibitory effect on collagen synthesis and fibroblasts proliferation in ACL tissue [8,9]. Instead, Lee et al. [10] have shown that cyclic tensile loading applied to fibroblasts increases the mRNA expression of collagen-I, but not that of collagen-III or biglycan: estrogen increased the mRNA expression of collagen-I and III and did not change that of biglycan, but the combined effects of cyclic tension and estrogen inhibited the mRNA expression of these three molecules.

Another work [11] demonstrated the variability of daily myofascial pain, which was more constant in oral contraceptive users with respect to non-users: the latter have peaks of pain alternating with pain-free periods within the menstrual cycle, with many variations in pain, whereas patients who used oral contraceptives were significantly more stable over time. Lee and Park [12] described how musculoskeletal pain characteristics are caused by the severity of menstrual pain. Lee and Petrofsky [13] demonstrated that changes in plantar fascia elasticity during the menstrual cycle may involve sexual hormones in the increasing elasticity of human connective tissue.

Various trials have shown that women treated with aromatase inhibitors, which stop the production of estrogen in post-menopausal women, often experience joint pain and musculoskeletal aching. These manifestations may be reduced after cessation of therapy, and one explanation for these findings is that a rapid drop in estrogen levels enhances nociception [14].

Evaluation of the effects of estrogen replacement therapy (ERT) in post-menopausal women demonstrates that it may influence tendon biomechanical properties and morphology, with smaller fibrils and higher fibril density, in contrast to the inhibiting effect of ERT on bone collagen synthesis. These observations indicate the possible role of estradiol in maintaining homeostasis in female connective tissue [15].

The aim of this work was to evaluate the effect of sex hormones, in particular beta-estradiol and relaxin-1, on the *in vitro* production of some elements of the extracellular matrix by human fascial fibroblasts, in relation to the hormone levels of the menstrual cycle. We aim at better understanding of how varying hormone levels can contribute to fascial tissue composition and consequently to fascial stiffness and sensitization of fascial nociceptors.

## Materials and methods

### Preparation of hormones for cell culture

According to indications (Sigma-Aldrich), hormone solutions were prepared as described below. Powder of  $\beta$ -estradiol was diluted in 1 ml absolute ethanol to prepare a solution of 1 mg  $\beta$ -estradiol, gently swirled to dissolve it and diluted in a 49-ml sterile medium during mixing, to obtain a 20- $\mu$ g/ml stock solution. Relaxin-1 (lyophilized powder, recombinant, Sigma-Aldrich) was reconstituted in Phosphate Buffered Saline solution containing 0.1% serum albumin, to obtain a concentration of 10  $\mu$ g/mL.

### Cell isolation and culture

Cells were isolated from human fascia lata of the thigh (~1 cm  $\times$  1 cm) collected from a volunteer, female patient, aged 50 y, who was undergoing elective surgical procedure at the Orthopedic Clinic of University of Padova. The patient was in the premenopausal period, and was not on hormone replacement therapy. The ethical regulations regarding research conducted on human tissues were carefully followed (approval no. 3722/AO/16, study approved on 21 April 2016 by the Ethical Committee for clinical trials in the province of Padova), after written informed consent was obtained from the donor. The sample was transported to the laboratory in phosphate buffered saline (PBS) within a few hours of collection, and digested with Collagenase B 0.1% in Hank's Balanced Salt Solution (HBSS) overnight. Fibroblast cells were isolated and characterized by immunohistochemical staining with anti-Fibroblast Surface Protein[1B10] antibody (1:100, Mouse monoclonal antibodies, AbCam Cambridge, UK), as previously described in one of our previous works [16]. Cell cultures were maintained at 37°C, 95% humidity and 5% CO<sub>2</sub>, in DMEM 1g/L glucose, 10% FBS and 1% penicillin-streptomycin antibiotic, and used from passages 3 to 9.

### Cell treatment with sex hormones

Isolated cells from fascia were plated (200 cells/mm<sup>2</sup> in 24-multiwells containing a glass coverslip) and allowed to attach for 48 h at 37°C. They were then maintained for 24 h in DMEM without serum, so as not to interfere with the treatment: endogenous hormone-binding proteins are present in varying concentrations in all serum and plasma samples and may markedly influence hormone treatments and assay results [17]. The cells were then treated for 48 h with  $\beta$ -estradiol and/or relaxin-1 human in DMEM without serum (see Table 1) [18–23]. In each experiment, one control sample underwent the same processing steps, but did not receive hormones. After treatment, cells were washed in PBS, fixed for 10 min with 2% paraformaldehyde in PBS, pH 7.4, and then washed three times in PBS before the staining protocols described below.

	$\beta$ -Estradiol (pg/ml)	Relaxin-1 (pg/ml)
Post menopausal period	10	0
Follicular phase	90	20
Periovulatory phase	400	20
Luteal phase	150	150
Pregnancy (2 <sup>nd</sup> trimester)	5000 (range 4000–7000)	4000

<https://doi.org/10.1371/journal.pone.0223195.t001>

**Table 1. Hormone levels.**

Average hormone levels during the women period, in pregnancy and after menopause.

<https://doi.org/10.1371/journal.pone.0223195.t001>

### Collagen staining

Picrosirius red staining was first applied to visualize collagen: Picro-Sirius Red solution (0.1 g of Sirius Red- Sigma Aldrich per 100 mL of saturated aqueous solution of picric acid) was applied to fixed cells for 20 min, and then washed out with acidified water (5 mL acetic acid, glacial, to 1 liter of water).

### Immunocytochemistry

The immunocytochemistry procedure included the following steps: after blocking of endogen peroxidase by 0.5% H<sub>2</sub>O<sub>2</sub> in PBS for 10 min at room temperature and repeated washes in PBS, samples were pre-incubated with a blocking buffer (0.1% bovine serum albumin, BSA, in PBS) for 60 min at room temperature. The cells were then incubated in: rabbit anti-collagen-I, N-terminal antibody (dilution 1:100, Sigma-Aldrich, Saint Louis, MO, USA), rabbit anti-collagen-III polyclonal antibody (dilution 1:100, Abcam, Cambridge, UK), or mouse anti-fibrillin monoclonal antibody (dilution 1:200, Merck Millipore, CA, USA). The primary antibodies were diluted in the same pre-incubation buffer and incubated overnight at 4°C. After repeated PBS washings, samples were incubated with the ready-to-use secondary antibody Advance HRP Detection System (Dako Corp., Carpinteria, CA, USA), and washed in PBS buffer. The reaction was then developed with 3,3'-diaminobenzidine (Liquid DAB + substrate Chromogen System kit Dako Corp.) and stopped with distilled water.

Negative controls were similarly treated, without the primary antibody, confirming the specificity of the immunostaining.

#### Image analysis

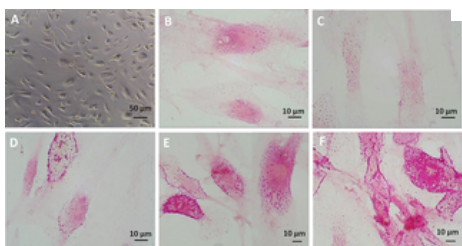
In all samples nuclei were counterstained with ready-to-use hematoxylin (Dako Corp.). Images were acquired on a Leica DMR microscope (Leica Microsystems, Wetzlar, Germany; objectives 20X and 40X, Leica). Computerized image analysis was performed with ImageJ software to quantify anti-collagen-I, anti-collagen-III and anti-fibrillin antibody positivity (staining was repeated at least 3 times with each antibody, and for each sample at least 20 images were analysed, magnification 20X).

#### Statistical analysis

Student's *t* test was used to verify significant differences when comparing data of control cells (not treated with any hormone) and cells treated with varying levels of  $\beta$ -estradiol and/or relaxin-1.

## Results

In Fig 1A is shown one bright field image of fascial fibroblasts seeded in multiwells and incubated with sex hormones in medium without serum: neither treatment nor the absence of serum affected cell growth in the *in vitro* culture, after cells attachment. The cells were not affected either by the absence of serum or hormone concentration: density and morphology remained the same with respect to cells maintained in culture with serum and without hormone incubation (data not shown).



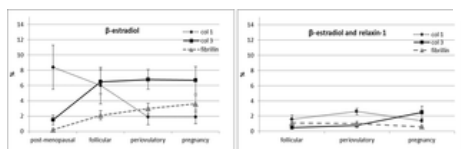
**Fig 1. Picrosirius red staining after  $\beta$ -estradiol.**

Bright field image (A) of cell culture after hormone treatment. Picrosirius red staining (B, C, D, E, F) of fascial fibroblast after 48 h of treatment with  $\beta$ -estradiol: control cells (B), 10 pg/mL (C), 90 pg/mL (D), 400 pg/mL (E), 5000 pg/mL (F).

<https://doi.org/10.1371/journal.pone.0223195.g001>

Staining with Picrosirius red (Fig 1B, 1C, 1D, 1E and 1F) was used for histological visualization of collagen fibers synthesized by the cells, showing a cytoplasmic stains. The pictures revealed some modifications according to hormone levels: after treatment with low concentrations of  $\beta$ -estradiol (10 pg/mL, post-menopausal levels) (Fig 1C), the staining decreased with respect to control cells (Fig 1B), but was much more evident with increasing hormone levels up to 5000 pg/mL (Fig 1F), corresponding to the average amount of  $\beta$ -estradiol during the 2<sup>nd</sup> trimester of pregnancy.

According to these results, immunocytochemical analysis was applied to explore and quantify the amount of components of the extracellular matrix: collagen-I, collagen-III and fibrillin. All results are shown in Table 2 and in Figs 2 and 3. Fascial cells can modulate the production of the extracellular matrix: when treated for 48 h with  $\beta$ -estradiol, the amount of collagen-I, III and fibrillin changed greatly according to hormone levels. With a post-menopausal level of  $\beta$ -estradiol (~10 pg/mL) the amount of collagen-I rose to 8.4% of positivity (with a statistically significant variation from the starting percentage of 5.2 in control cells). Conversely the amount of collagen-III has significantly lowered compared with the control (1.5% of positivity, with respect to 2.4% of the control cells). Instead, with periovulatory or pregnancy hormone concentrations, the amount of different collagen types switched: collagen-III rose to 6.8 or 6.7% (periovulatory and pregnancy concentrations, respectively), whereas collagen-I fall to 1.9%. All these variations were statistically significant.



**Fig 2. Curves of positivity to col I, col III and fibrillin: effect of relaxin-1.**

Trend of positivity to anti-collagen-I, anti-collagen-III and fibrillin antibody, according to hormonal phases of a woman, after treatment with  $\beta$ -estradiol only (left) or  $\beta$ -estradiol and relaxin 1 (right).

<https://doi.org/10.1371/journal.pone.0223195.g002>

**Fig 3. Immunostaining after hormone treatments.**

Collagen-I (A-D), collagen-III (E-H) and fibrillin (I-L) expression in fascial fibroblasts after 48 h of treatment with  $\beta$ -estradiol 10 pg/mL (B, F, J),  $\beta$ -estradiol 400 pg/mL (C, G, K), or  $\beta$ -estradiol 400 pg/mL+ relaxin-1 20 pg/mL (D, H, L). Control cells (A, E, I): cells not incubated with hormones. Scale bars: 100  $\mu$ m.  
<https://doi.org/10.1371/journal.pone.0223195.g003>

**Table 2. Percentages of positivity to col I, col III and fibrillin according to hormone level.**

Percentage (%) of positivity to anti-col I, anti-col III, and anti-fibrillin antibodies of an *in vitro* cell culture of fascial fibroblasts, treated for 48h with various levels of  $\beta$ -estradiol ( $\beta$  estr), relaxin-1 (RX1), or  $\beta$ -estradiol and relaxin-1 ( $\beta$  estr + RX1). Control cells (ctrl) were incubated in cell culture medium without serum and without hormone treatment. Values are means and standard deviations of at least three independent experiments, analysed by ImageJ software. Underlined values are not significantly different from corresponding control value. All other values had a statistically significant difference:  $p < 0.05$ , Student's *t* test, treated vs. controls.

<https://doi.org/10.1371/journal.pone.0223195.t002>

Fibrillin also increased with increasing  $\beta$ -estradiol levels (from 0.2 to 3.6%, in menopause and pregnancy, respectively).

When relaxin-1 was added to the cell culture, either alone or in combination with  $\beta$ -estradiol, the production of collagen-I, III and fibrillin decreased and remained at the same level in all the phases of the period. For example, with relaxin-1 stimulation only, the percentage of collagen-I fibers fell to 1.7% with hormone levels of the follicular phase, and remained at the same level even with periovulatory hormone levels.

In addition, when relaxin-1 was added to  $\beta$ -estradiol, the amount of collagen-III during the periovulatory phase became 0.8%, with respect to 6.8% with  $\beta$ -estradiol stimulation only. Fibrillin also fell from 3 to 1%, and collagen-I reached 2.6%.

In general, stimulation with relaxin-1 decreases the synthesis of all the collagen fiber components with respect to control cells, whereas the total amount of fibrillin remained similar to control levels (0.5%), reaching 1% of positivity with the hormone levels of the follicular and periovulatory phases.

## Discussion

This is the first study demonstrating that the human fascia can respond to various hormonal stimuli, regulating the production of some components of the extracellular matrix (ECM), collagen-I, collagen-III and fibrillin.

All matrix components (collagen fibers, proteoglycans/glycosaminoglycans, elastin, fibronectin, laminins, and several other glycoproteins) bind to each other in a complex and highly dynamic network which permits and regulates various cellular functions such as survival, growth, migration and differentiation [24]. The composition and structure of ECM determines tissue behavior, and ECM reorganization is essential for normal reproductive functions during pregnancy and parturition. Nallasamy and coauthors have demonstrated that progesterone and estrogen play distinct and complementary roles to regulate synthesis, processing, assembly and structural reorganization of both collagen and elastic fibers in the cervix during pregnancy, regulating the mechanical function of the tissue [25].

As we found that the fascia becomes enriched in collagen-I, with low hormone levels, the *in vivo* fascial tissue may probably become more rigid during menopause. Other studies related to the skin have already demonstrated that changes in collagen lead to diminished skin elasticity and strength [26], and remodeling of the collagenous network typical of tumor tissues is known to cause increased tissue stiffness [27]. If the connective tissue is altered, the behavior of the fascia and underlying muscle becomes compromised, being source of myofascial disorders in many cases [28]. These results are in line with other studies: a recent work demonstrated that vaginal fibroblasts isolated from postmenopausal women with pelvic organ prolapse show higher sensitivity and lower tolerance to mechanical stretching with respect to normal fibroblasts, with higher expression of collagen-I and a lower expression of collagen-III mRNA [29]. This work provides evidence supporting estrogen therapy to prevent and inhibit prolapse in postmenopausal women. ECM stiffening, induced by increased collagen deposition, especially collagen-I and cross-linking, disrupts normal tissue morphogenesis. In parallel, during menopause collagen-III and fibrillin contents decrease in a statistically significant way (from 2.4 to 1.5%, and from 0.5 to 0.2%, respectively), reducing the scaffolding which assists the alignment and cross-linking of elastin molecules [30], and consequently decreasing the elastic properties of fascial tissue (Fig 4).

**Fig 4. Fascia and ECM production according to hormone levels.**

Theoretical scheme of fascial cell response and extracellular matrix rearrangement at different hormone levels (estrogen and relaxin-1).

<https://doi.org/10.1371/journal.pone.0223195.g004>

Instead, when hormone levels rise, e.g. during pregnancy, the fascial tissue becomes more elastic: after administration of  $\beta$ -estradiol, collagen-I falls from 5.2 to 1.9%, whereas collagen-III and fibrillin increase (from 2.4 to 6.7%, and from 0.5 to 3.6%, respectively; see Fig 4). This change in ECM composition allows tissues to adapt during pregnancy process, like as during the ovulatory period, in which the same trend in ECM change can be observed: collagen-I falls from 5.2 to 1.9%, collagen-III increases from 2.4 to 6.8%, and fibrillin rises from 0.5 to 3%. A rigid fascia can help to stabilize the sacroiliac joint and the spine, as explained by Gracovetsky, who demonstrated how a rigid thoracolumbar fascia allows intracompartment pressure to increase: the extension

force produced by expansion of the erector spinae muscles can thus contribute to the ability to lift a load [31,32]. So more lax fasciae may trigger pain at the pelvic or lumbar level, which is typical of pregnancy [33,34]. Another study by Marnach et al. [35] highlighted the development of joint pain during pregnancy in 35 women in the first-trimester: it was not associated with increased joint laxity, but with significantly increased levels of estradiol and progesterone. In the same way, fluctuations in estradiol were associated with aches, joint pain, stiffness, and depressed mood during the menopausal transition [36].

The surprising result which we obtained is that, if hormone relaxin-1 is added to the culture, these evident and rapid changes are reduced, as shown in Fig 4: from follicular hormone concentrations to pregnancy levels, there is a continuous decrease in collagen-I fibers and a corresponding increase in tissue elasticity, with collagen-III that goes from 0.5 to 2.5%. These slowed changes confirm the antifibrotic function of relaxin-1 by its ability to reduce matrix synthesis. Recent studies on relaxin-1 gene-knockout mice have, in fact, established this hormone as a naturally occurring moderator of collagen turnover, preventing fibrogenesis, but also improving organ structure and function, even in non-reproductive organs, including heart, lung, kidney, liver and skin [37]. It is possible that women with hormonal dysfunctions may present a dysregulation of extracellular matrix production, causing stiffness, fibrosis and inflammation which create sensitization of fascial nociceptors [38,39]. This may explain why oral administration of estrogen (the dose of  $\beta$ -estradiol via oral administration is usually 50 pg/mL) may resolve myofascial pain in women [40]. It has been demonstrated that there is a difference in ligamentous laxity between oral contraceptive pill (OCP) users and non-users: OCP users showed a statistically significant decrease in anterior translation of the tibia with respect to non-users, demonstrating the role of OCP in the prevention of anterior cruciate ligament injuries [41]. This is in line with our results, which confirm that hormonal imbalance damages myofascial tissue, leading to drastic changes in its constitution in collagen and elastic fibers, and thus modifying its biomechanical properties. Other authors have confirmed that the balance of estrogen  $\alpha$ /estrogen  $\beta$  affects the physiological action of estradiol in all estrogen-responsive tissues [42].

Our findings are limited because this is an *in vitro* study, in cells derived from only one patient. Although in literature it is demonstrated that the fibroblasts replication in culture does not correlate with donor age [43], we expect differences in responsiveness depending on the age and period of the patients as we have demonstrated in our previous work, in which the expression of the receptors for estrogen and for relaxin-1 resulted lower in post-menopausal women, according to the decrease in estrogen hormone levels [3]. Although in the next future this work will be deepened by repeating the analyzes on other cells isolated from premenopausal women and then comparing the results with samples of post-menopausal women, we have chosen for this pilot *in vitro* study the cells that in our previous work had shown a homogeneous and high positivity of expression for hormone receptors [3]. Furthermore we analysed only two hormones ( $\beta$ -estradiol and relaxin-1), with no reference to the extracellular assembly and to the degradation of the collagen fibers, essential to determine the organization of the ECM and consequently the stiffness of a tissue [44]. Study of the complex multifactorial effect of sex hormones will clarify the association of sex hormones with other hormonal factors, with other elements of the ECM, or with patients age.

Hansen and co-authors have demonstrated that the administration of oral contraceptives (OC) to young women was associated with lower tendon collagen synthesis, probably because the use of OC is associated with lower insulin-like growth factor-1 (IGF-I), which enhances tendon collagen synthesis [45]. Ozturk et al. analysed the effect of Tamoxifen, a synthetic non-steroidal antiestrogen used primarily in the treatment of breast cancer, on fibrotic disease via downregulation of TGF $\beta$ , with inhibition of fibroblast proliferation and lower collagen density [46]. Other authors have analysed the dependence of the effects on women's age: estrogen reduces tendon and ligament stiffness, so young women probably have a greater risk of ACL rupture. Instead, in post-menopausal women, estrogen/hormonal replacement therapy may counteract degenerative changes in skeletal muscle, with beneficial effects on skeletal muscle protein maintenance, muscle mass and strength, in preventing tendinopathy, and reducing tendon stiffness [47].

## Conclusions

Our further studies will hopefully shed light on the multifactorial mechanism of sex hormones and how they affect the fascia. However, the present work may help to explain some links between hormonal factors and remodeling of fascial matrix, leading in the next future to novel pharmaceutical and mechanical approaches for treating myofascial disorders, which consider how the diversity of hormone levels can affect the properties of the fascial tissue.

## Acknowledgments

We would like to thank for the strict collaboration with Dr. Carlo Biz, Orthopedic and Traumatology Clinic, Department of Surgery, Oncology and Gastroenterology, University of Padova, for patient data and samples collection.

## References

1. Chidi-Ogbolu N, Baar K. Effect of Estrogen on Musculoskeletal Performance and Injury Risk. *Front Physiol.* 2019;9:1834. pmid:30697162  
[View Article](#) • [PubMed/NCBI](#) • [Google Scholar](#)
2. Bridgeman JT, Zhang Y, Donahue H, Wade AM, Juliano PJ. Estrogen receptor expression in posterior tibial tendon dysfunction: a pilot study. *Foot Ankle Int* 2010;31:1081–4. pmid:21189209  
[View Article](#) • [PubMed/NCBI](#) • [Google Scholar](#)
3. Fede C, Albertin G, Petrelli L, Sfriso MM, Biz C, De Caro R, et al. Hormone receptor expression in human fascial tissue. *Eur J Histochem* 2016;60:2710. pmid:28076930  
[View Article](#) • [PubMed/NCBI](#) • [Google Scholar](#)
4. Zazulak BT, Paterno M, Myer GD, Romani WA, Hewett TE. The effects of the menstrual cycle on anterior knee laxity: a systematic review. *Sports Med.* 2006;36:847–62. pmid:17004848  
[View Article](#) • [PubMed/NCBI](#) • [Google Scholar](#)

5. Shultz SJ, Schmitz RJ, Kong Y, Dudley WN, Beynnon BD, Nguyen AD, et al. Cyclic variations in multiplanar knee laxity influence landing biomechanics. *Med Sci Sports Exerc* 2012;44:900–9. pmid:22033513  
[View Article](#) • [PubMed/NCBI](#) • [Google Scholar](#)
6. Konopka JA, DeBaun MR, Chang W, Dragoo JL. The Intracellular Effect of Relaxin on Female Anterior Cruciate Ligament Cells. *Am J Sports Med* 2016;44:2384–92. pmid:27245459  
[View Article](#) • [PubMed/NCBI](#) • [Google Scholar](#)
7. Shultz SJ, Sander TC, Kirk SE, Perrin DH. Sex differences in knee joint laxity change across the female menstrual cycle. *J Sports Med Phys Fitness* 2005;45:594–603. pmid:16446695  
[View Article](#) • [PubMed/NCBI](#) • [Google Scholar](#)
8. Liu SH, Al-Shaikh RA, Panossian V, Finerman GA, Lane JM. Estrogen affects the cellular metabolism of the anterior cruciate ligament. A potential explanation for female athletic injury. *Am J Sports Med* 1997;25:704–9. pmid:9302481  
[View Article](#) • [PubMed/NCBI](#) • [Google Scholar](#)
9. Yu WD, Liu SH, Hatch JD, Panossian V, Finerman GA. Effect of estrogen on cellular metabolism of the human anterior cruciate ligament. *Clinical Orthopaedics and Related Research* 1999;366:229–38.  
[View Article](#) • [Google Scholar](#)
10. Lee CY, Liu X, Smith CL, Zhang X, Hsu HC, Wang DY, et al. The combined regulation of estrogen and cyclic tension on fibroblast biosynthesis derived from anterior cruciate ligament. *Matrix Biol* 2004;23:323–9. pmid:15464364  
[View Article](#) • [PubMed/NCBI](#) • [Google Scholar](#)
11. Dao TT, Knight K, Ton-That V. Modulation of myofascial pain by the reproductive hormones: a preliminary report. *J Prosthet Dent* 1998;79:663–70. pmid:9627895  
[View Article](#) • [PubMed/NCBI](#) • [Google Scholar](#)
12. Lee JW, Park HS. Relation of the factor to menstrual pain and musculoskeletal pain. *J Exerc Rehabil* 2015;11:108–11. pmid:25960984  
[View Article](#) • [PubMed/NCBI](#) • [Google Scholar](#)
13. Lee H, Petrofsky J. Differences Between Men and Women in Balance and Tremor in Relation to Plantar Fascia Laxity During the Menstrual Cycle. *J Athl Train* 2018;53:255–261. pmid:29485291  
[View Article](#) • [PubMed/NCBI](#) • [Google Scholar](#)
14. Felson DT, Cummings SR. Aromatase inhibitors and the syndrome of arthralgias with estrogen deprivation. *Arthritis Rheum* 2005;52:2594–8. pmid:16142740  
[View Article](#) • [PubMed/NCBI](#) • [Google Scholar](#)
15. Hansen M, Kongsgaard M, Holm L, Skovgaard D, Magnusson SP, Qvortrup K, et al. Effect of estrogen on tendon collagen synthesis, tendon structural characteristics, and biomechanical properties in postmenopausal women. *Journal of Applied Physiology* 2009;106:1385–93. pmid:18927264  
[View Article](#) • [PubMed/NCBI](#) • [Google Scholar](#)
16. Fede C, Albertin G, Petrelli L, Sfriso MM, Biz C, De Caro R, et al. Expression of the endocannabinoid receptors in human fascial tissue. *Eur J Histochem*. 2016;60:2643. pmid:27349320  
[View Article](#) • [PubMed/NCBI](#) • [Google Scholar](#)
17. Selby C. Interference in immunoassay. *Ann Clin Biochem* 1999; 36:704–721. pmid:10586307  
[View Article](#) • [PubMed/NCBI](#) • [Google Scholar](#)
18. Bridges RS, Nephew BC. Neuroendocrine Control: Maternal Behavior. *Encyclopedia of Neuroscience* 2009, 333–342.  
[View Article](#) • [Google Scholar](#)
19. Reed BG, Carr BR. The Normal Menstrual Cycle and the Control of Ovulation. In: Feingold KR, Anawalt B, Boyce A, et al., editors. 2000. South Dartmouth (MA).
20. Abbassi-Ghanavati M, Greer LG, Cunningham FG. Pregnancy and laboratory studies: a reference table for clinicians. *Obstet Gynecol*. 2009;114(6):1326–31. pmid:19935037  
[View Article](#) • [PubMed/NCBI](#) • [Google Scholar](#)
21. Goldsmith LT, Weiss G. Relaxin in Human Pregnancy. *Ann N Y Acad Sci*. 2009 Apr; 1160: 10.1111/j.1749-6632.2008.03800.x.  
[View Article](#) • [Google Scholar](#)
22. Wreje U, Kristiansson P, Aberg H, Byström B, von Schoultz B. Serum levels of relaxin during the menstrual cycle and oral contraceptive use. *Gynecol Obstet Invest*. 1995;39:197–200. pmid:7789917  
[View Article](#) • [PubMed/NCBI](#) • [Google Scholar](#)

23. Günzel-Apel AR, Zabel S, Bunck CF, Dieleman SJ, Einspanier A, Hoppen HO. Concentrations of progesterone, prolactin and relaxin in the luteal phase and pregnancy in normal and short-cycling German Shepherd dogs. *Theriogenology*, 2006. Vol 66: 1431–1435. pmid:16499960  
[View Article](#) • [PubMed/NCBI](#) • [Google Scholar](#)
24. Theocharis AD, Skandalis SS, Gialeli C, Karamanos NK. Extracellular matrix structure. *Adv Drug Deliv Rev* 2016;97:4–27. pmid:26562801  
[View Article](#) • [PubMed/NCBI](#) • [Google Scholar](#)
25. Nallasamy S, Yoshida K, Akins M, Myers K, Iozzo R, Mahendroo M. Steroid Hormones Are Key Modulators of Tissue Mechanical Function via Regulation of Collagen and Elastic Fibers. *Endocrinology* 2017;158:950–962. pmid:28204185  
[View Article](#) • [PubMed/NCBI](#) • [Google Scholar](#)
26. Raine-Fenning NJ, Brincaat MP, Muscat-Baron Y. Skin aging and menopause: implications for treatment. *Am J Clin Dermatol*. 2003;4:371–378. pmid:12762829  
[View Article](#) • [PubMed/NCBI](#) • [Google Scholar](#)
27. Brauchle E, Kasper J, Daum R, Schierbaum N, Falch C, Kirschniak A, et al. Biomechanical and biomolecular characterization of extracellular matrix structures in human colon carcinomas. *Matrix Biol*. 2018;68–69:180–193. pmid:29605717  
[View Article](#) • [PubMed/NCBI](#) • [Google Scholar](#)
28. Stecco C, Fede C, Macchi V, Porzionato A, Petrelli L, Biz C, et al. The fasciocytes: A new cell devoted to fascial gliding regulation. *Clin Anat*. 2018;31(5):667–676. pmid:29575206  
[View Article](#) • [PubMed/NCBI](#) • [Google Scholar](#)
29. Wang S, Lü D, Zhang Z, Jia X, Yang L. Effects of mechanical stretching on the morphology of extracellular polymers and the mRNA expression of collagens and small leucine-rich repeat proteoglycans in vaginal fibroblasts from women with pelvic organ prolapse. *PLoS One* 2018;13:e0193456. pmid:29630675  
[View Article](#) • [PubMed/NCBI](#) • [Google Scholar](#)
30. Wagenseil JE, Mecham RP. New insights into elastic fiber assembly. *Birth Defects Res C Embryo Today* 2007;81:229–40. pmid:18228265  
[View Article](#) • [PubMed/NCBI](#) • [Google Scholar](#)
31. Gracovetsky S. *The Spinal Engine*, Springer–Verlag, Wien, New York (NY);1988.
32. Stecco C. *Functional Atlas of the Human Fascial System*. 1st edn. Edinburgh: Elsevier; 2015. p. 211.
33. Sabino J, Grauer JN. Pregnancy and low back pain. *Curr Rev Musculoskelet Med* 2008;1:137–41. pmid:19468887  
[View Article](#) • [PubMed/NCBI](#) • [Google Scholar](#)
34. Stones RW, Vits K. Pelvic girdle pain in pregnancy. *BMJ* 2005;331:249–50. pmid:16051994  
[View Article](#) • [PubMed/NCBI](#) • [Google Scholar](#)
35. Marnach ML, Ramin KD, Ramsey PS, Song SW, Stensland JJ, An KN. Characterization of the relationship between joint laxity and maternal hormones in pregnancy. *Obstet Gynecol* 2003;101(2):331–5. pmid:12576258  
[View Article](#) • [PubMed/NCBI](#) • [Google Scholar](#)
36. Freeman EW, Sammel MD, Lin H, Gracia CR, Pien GW, Nelson DB, et al. Symptoms associated with menopausal transition and reproductive hormones in midlife women. *Obstet Gynecol* 2007;110(2 Pt 1):230–40.  
[View Article](#) • [Google Scholar](#)
37. Samuel CS, Lekkabe ED, Mookerjee I. The Effects of Relaxin on Extracellular Matrix Remodeling in Health and Fibrotic Disease. In: Agoulnik A.I. (eds) *Relaxin and Related Peptides. Advances in Experimental Medicine and Biology*. New York (NY): Springer; 2007. 612: p. 88–103.  
[https://doi.org/10.1007/978-0-387-74672-2\\_7](https://doi.org/10.1007/978-0-387-74672-2_7)
38. Pavan PG, Stecco A, Stern R, Stecco C. Painful connections: densification versus fibrosis of fascia. *Curr Pain Headache Rep* 2014;18:441. pmid:25063495  
[View Article](#) • [PubMed/NCBI](#) • [Google Scholar](#)
39. Wells RG. Tissue mechanics and fibrosis. *Biochim Biophys Acta*. 2013;1832:884–90. pmid:23434892  
[View Article](#) • [PubMed/NCBI](#) • [Google Scholar](#)
40. Sarajari S, Oblinger MM. Estrogen effects on pain sensitivity and neuropeptide expression in rat sensory neurons. *Exp Neurol* 2010;224:163–9. pmid:20303952  
[View Article](#) • [PubMed/NCBI](#) • [Google Scholar](#)
41. Martineau PA, Al-Jassir F, Lenczner E, Burman ML. Effect of the oral contraceptive pill on ligamentous laxity. *Clin J Sport Med* 2004;14:281–6. pmid:15377967  
[View Article](#) • [PubMed/NCBI](#) • [Google Scholar](#)

42. Park YM, Pereira RI, Erickson CB, Swibas TA, Cox-York KA, Van Pelt RE. Estradiol-mediated improvements in adipose tissue insulin sensitivity are related to the balance of adipose tissue estrogen receptor  $\alpha$  and  $\beta$  in postmenopausal women. *PLoS One* 2017;12:e0176446. pmid:28472101  
[View Article](#) • [PubMed/NCBI](#) • [Google Scholar](#)
43. Cristofalo VJ, Allen RG, Pignolo RJ, Martin BG, Beck JC. Relationship between donor age and the replicative lifespan of human cells in culture: A reevaluation. *Proc. Natl. Acad. Sci. USA* 1998; 95: 10614–10619. pmid:9724752  
[View Article](#) • [PubMed/NCBI](#) • [Google Scholar](#)
44. Chen CZC, Raghunath M. Focus on collagen: in vitro systems to study fibrogenesis and antifibrosis \_ state of the art. *Fibrogenesis Tissue Repair* 2009;2:7. pmid:20003476  
[View Article](#) • [PubMed/NCBI](#) • [Google Scholar](#)
45. Hansen M, Miller BF, Holm L, Doessing S, Petersen SG, Skovgaard D, et al. Effect of administration of oral contraceptives in vivo on collagen synthesis in tendon and muscle connective tissue in young women. *J Appl Physiol* 2009;106:1435–43. pmid:18845777  
[View Article](#) • [PubMed/NCBI](#) • [Google Scholar](#)
46. Ozturk Y, Bozkurt I, Yaman ME, Guvenc Y, Tolunay T, Bayram P, et al. Histopathologic Analysis of Tamoxifen on Epidural Fibrosis. *World Neurosurg* 2018;111:e941–e948. pmid:29325937  
[View Article](#) • [PubMed/NCBI](#) • [Google Scholar](#)
47. Hansen M. Female hormones: do they influence muscle and tendon protein metabolism? *Proc Nutr Soc* 2018;77:32–41. pmid:28847313  
[View Article](#) • [PubMed/NCBI](#) • [Google Scholar](#)